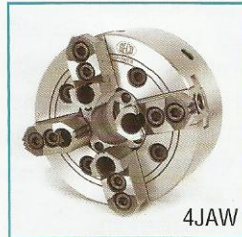
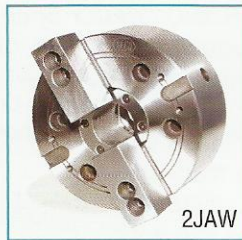
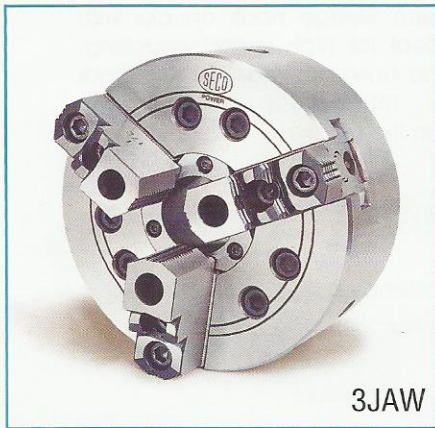




**OPEN CENTRE / HOLLOW
DIRECT MOUNTING POWER CHUCK**

TYPE OCD

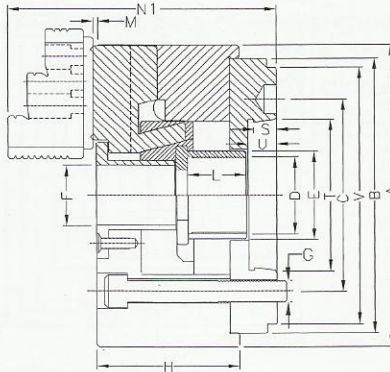
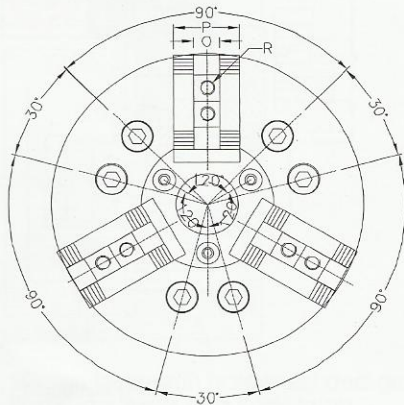
POWER



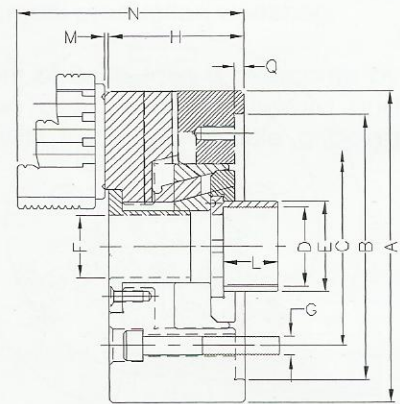
SECO open centre wedge hook chucks with thru hole are ideal for high speed chucking, bar chucking and universal machining. These chucks come fitted with back plate ready to mount on the machine.

SPECIAL FEATURES :

- High Speed
- Constant accuracy & high endurance
- Strong Gripping
- Available in 2, 3 & 4 Jaw configurations



OCD (Direct Mounting)



OC (Plain Back)

A	B	Taper Nose	C	D	E	F	G	H	L	M	N	N1	OH7	P	Q	R	S	T	U	V	Serrations
135 mm	110	A2-4	82.6	M36 x 2.0	48	30	M10	61	20	1.5	92	105.0	10	27	4	M8 x 1.25	10	65.513	12	108	1/16" x 90°
165 mm	140	A2-5	104.8	M42 x 1.5	48	35	M10	82	28	2	120	133.0	12	35	5	M10 x 1.25	12	82.563	15	133	1/16" x 90°
200 mm	170	A2-6	133.4	M55 x 2.0	62	48	M12	91	28	2	146	165.0	17	40	6	M12 x 1.75	13	106.375	16	165	1/16" x 90°
250 mm	220	A2-6/ A2-8	133.4/ 171.4	M72 x 2.0	79	65	M12/ M16	94	28	2	150	170.0	21	45	6	M16 x 2.0	14	139.719	18	210	1/16" x 90°
315 mm	220/ 300	A2-8/ A2-11	171.4/ 235	M92 x 2.0	102	80	M16/ M18	91	28	4	153	177.0	21	50	6	M16 x 2.0	16	196.869	20	280	1/16" x 90°

LONG STROKE



165 mm LS	140	A2-5	104.8	M42 x 1.5	48	35	M10	92	24	5	132	145.0	12	35	5	M10 x 1.25	12	82.563	15	133	1/16" x 90°
200 mm LS	170	A2-6	133.4	M55 x 2.0	62	48	M12	100	28	2	154	173.0	17	40	6	M12 x 1.75	13	106.375	16	165	1/16" x 90°

NOTE : 1.5mm x 60° serrations are optional.

SIZE	Max. RPM	Jaw Stroke (Per Jaw)	Plunger Stroke (Max.)	Weight (Kgs.) approx	Operating Force (Max. Kgf.)	Gripping Force (Max. Kgf.)
135 mm	6000	2.75	10	9	1600	3000
165 mm	6000	2.75	12	12	3000	7000
200 mm	5000	3.75	17	21	4000	9000
250 mm	4200	4.4	19	35	5000	10000
315 mm	3200	4.4	19	50	6000	13500

LONG STROKE



165 mm LS	5000	6.5	25.0	16.0	3000	7000
200 mm LS	4000	7.5	30.0	25.0	4000	9000

Chucks can be supplied with back plates of other International Standards on demand



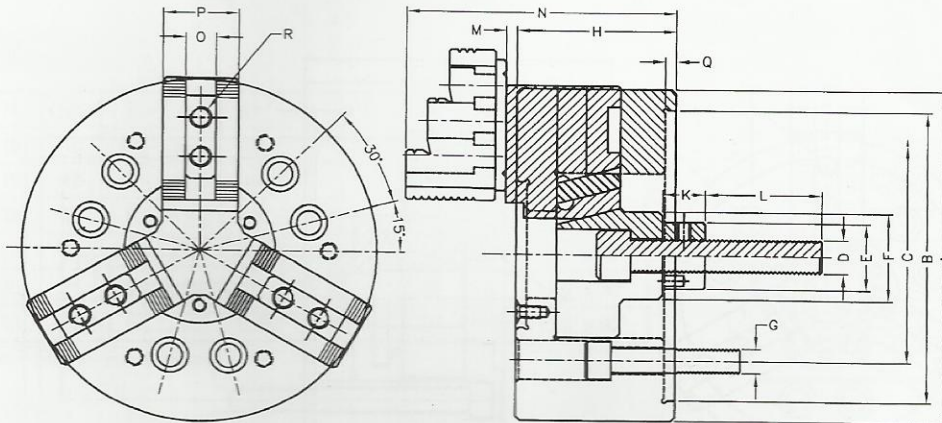
POWER



SECO close centre wedge hook type power chucks are cost effective solution for universal machining where thru-hole is not essential.

SPECIAL FEATURES :

- Constant accuracy & high endurance
- Strong Gripping
- Available in 2, 3 & 4 Jaw configurations



A	B H6	C	D	E	F	G	H	K	L	M	N	OH7	P	Q	R	SERRATIONS
125 mm	115.0	82.6	M12	24	35	M 10	59	20	55	9	100	10	25	4	M8 x 1.25	1/16" x 90°
160 mm	140.0	104.8	M16	32	42	M10	75	20	55	5	114	12	35	5	M10 x 1.5	1/16" x 90°
200 mm	170.0	133.4	M20	36	52	M12	90	20	55	6	148	17	40	6	M12 x 1.75	1/16" x 90°
250 mm	220	133.4 / 171.4	M20	36	52	M12 / M16	97	20	55	3	155	21	45	6	M16 x 2.0	1/16" x 90°
315 mm	220 / 300	171.4 / 235	M20	36	60	M16 / M18	105	20	50	4	171	21	45	6	M16 x 2.0	1/16" x 90°

NOTE : 1.5mm x 60° serrations are optional.

SIZE	Max. RPM	Jaw Stroke (Per Jaw)	Plunger Stroke (Max.)	Weight (Kgs.) approx	Operating Force (Max. Kgf.)	Gripping Force (Max. Kgf.)
125 mm	3000	3.5	17	8	600	1200
160 mm	4000	5	19	12	2000	4000
200 mm	3800	5	19	21	3500	7000
250 mm	2500	5	20	38	5000	10000
315 mm	2000	5	20	53	5000	10000

DIRECT MOUNTING OPTION AVAILABLE